



RP

Series

Features

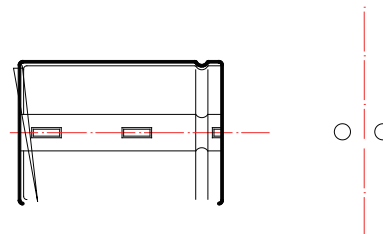
- High ripple current, Smaller size, Load life of 2000 hours at 105 °C, Used in Inverter welding machine.
- RoHS Adapted to the RoHS directive.



Specifications

Items	Performance Characteristics						
Operating Temperature Range	-25~ +105						
Rated Voltage Range	200- 450V						
Capacitance Tolerance	± 20% (120Hz, 20°C)						
Leakage Current	≤ 0.01CV (μA) 1.5mA (5 min) or 20 μA for 5 minutes, Whichever is smaller						
Dissipation Factor (tg δ) (+20 °C, 120Hz)	<table border="1"> <tr> <td>Rated voltage(V)</td> <td>200V ~ 250V</td> <td>400- 450V</td> </tr> <tr> <td>tg δ</td> <td>0.15</td> <td>0.18</td> </tr> </table>	Rated voltage(V)	200V ~ 250V	400- 450V	tg δ	0.15	0.18
	Rated voltage(V)	200V ~ 250V	400- 450V				
tg δ	0.15	0.18					
Temperature Characteristics (Impedance ratio at 120Hz)	<table border="1"> <tr> <td>U_R (V)</td> <td>200V ~ 250V</td> <td>400- 450</td> </tr> <tr> <td>Z-25 / Z+20</td> <td></td> <td>8</td> </tr> </table>	U _R (V)	200V ~ 250V	400- 450	Z-25 / Z+20		8
	U _R (V)	200V ~ 250V	400- 450				
Z-25 / Z+20		8					
Load Life	+105 °C 2000 hours 16 hours After applying rated voltage with specified ripple current for 2000 hours at +105 °C and then resumed for 16 hours: Capacitance change ± 20% ± 20% of the initial measured value Leakage current Initial specified value Dissipation factor 2 2 times of the initial specified value						
Shelf Life	+105 °C 1000 hours 30 minutes 16 hours After storage for 1000 hours at +105 °C, U _R to be applied for 30 minutes and then resumed for 16 hours: Capacitance change ± 20% ± 20% of the initial measured value Leakage current Initial specified value Dissipation factor 2 2 times of the initial specified value						

Case Table



Unit: mm

Frequency Coefficient

U _R (V) \ (Hz)	50	120	300	1K	10K	100K
200- 450	0.80	1.00	1.20	1.30	1.41	1.43

